

Overview

Please choose a topic with your mouse or use search in the help index.

[Introduction](#)

[About Font-ABC](#)

[Shareware](#)

[Registration](#)

[Installation](#)

[Menu Commands](#)

[Toolbar](#)

[Sample Text](#)

[Tips&Tricks](#)

[Problems](#)

Introduction

With Windows 3.1 the user has access to a nearly unlimited number of fonts. For every task you may choose another font. Look only at the hundreds of fonts that are available as shareware.

Font-ABC will help you to keep the overview. Not all fonts are of use for every application: Not all fonts are free scalable, that means you cannot use them in every size you wish. Some fonts have only capitals (for headlines) or initials.

With Font-ABC you are able to view and print every printable font using your own sample text in any size and style that you wish. You may print a font catalog of all installed fonts and uninstall fonts that are not used as often. Not all fonts are really needed all the time and every installed font uses more memory and increases Windows startup time.

Limits: Font-ABC is not a font installer. You may use Windows Control Panel or ATM (Adobe Type Manager) to do this.

Font-ABC shows all printable fonts in the font list. If some of them are not True Type Fonts, but only Printer Fonts, you may get a message and not see them as sample text on the screen, but you may still choose them for printout.

see also: [Tips&Tricks](#)

Info

font-ABC 1.1



Copyright 1994, 1995 J. Behling

Font-ABC is a **Shareware**-Program, that means you may evaluate it for a maximum of 30 days but after 30 days you should register the program for a small registration fee. You have the capability to fully test Font-ABC and all its functions (there are no limits) before paying.

Help to keep the shareware principle alive and register!

Shareware

This program is Shareware. You may (and should) copy and distribute it freely in its original form.

All rights reserved. You are not allowed to distribute this software for any commercial use without my permission. Only a charge for copying plus s+h-fee may be charged. If used in samplers (also as CD-ROM) you are required to send one example to the author.

SHAREWARE = FAIRWARE

Shareware means you may evaluate the program for a maximum of 30 days but after 30 days you should register the program for a small registration fee. You have the capability to fully test Font-ABC and all its functions (there are no limits) before paying.

As a registered user you get the following advantages:

- * Peace of mind. You are a legal user of this program
- * No Shareware Screens
- * Program version update notification, if wanted
- * Version updates at a reduced price
- * Help with problems (Mail or E-Mail)
- * You help to keep Shareware alive!

The author disclaims all warranties, whether express or implied, including but not limited to implied warranties of merchantability or fitness for a particular purpose. In no event will the author be liable for any damages in connection with use of this software.

Registration

For a minimal registration fee you become a legal user of Font-ABC.

Print order form "[order.txt](#)", fill in all the blanks and send it by mail or e-mail to the address below. Send the registration fee to my bank and you will receive your personal registration code which allows further use of Font-ABC as soon as possible.

Shareware screens will disappear and you will receive version update information if wanted.

Address:

J. Behling

Esternaystrasse 23f

D-76337 Waldbronn

Germany

CIS: 100524,3121

INTERNET: 100524.3121@compuserve.com

Note: You may also use the CompuServe Registration Database for registration. This is the easiest and fastest way to register outside Europe (GO SWREG: ID #4710)!

More Information see "ReadMe"!

Installation

Start installation with
abcsetup

You may accept the suggested path or enter another one.

The following files must be on your target disk after installation:

Font-ABC Directory:

* readme.txt	
* fontabce.exe	Main program
* fontabce.hlp	Help file
* order.txt	Order form

Windows Directory:

* fontabc.ini	Configuration file
---------------	--------------------

Windows/System Directory:

* vbrun300.dll	Visual Basic Runtime-Module
* cmdialog.vbx	Runtime-Module
* threed.vbx	Runtime-Module

ATTENTION: These files may also be used by other programs!
If you want to uninstall Font-ABC for any reason, make sure that no other programs use these files before deleting them!

Note:

Font-ABC expects to find the Windows-Standard-Font Arial installed on your system. If not you may edit your FONTABC.INI file (Windows-Directory) in section DEFAULTS (in brackets) "Arial=" another font type, e.g. "Arial=Helvetica".
If possible choose option "use True Types" in Windows Control Panel.

Menu Commands

File

Load: Reloads earlier saved settings like font selected, size, sample text.

Save: Saves current settings.

Print: Calls Print Menu and prints sample text or character charts
You may also choose printout of sample text for ALL installed fonts.

Printer Setup: Standard menu for printer setup.

Exit: Exits program.
Before exiting you will always be asked if you want to save the current settings.

View

Normal: Selects font type normal.

Bold: Selects font type bold and shows this in the status windows (upper right corner).

Italic: Selects font type italic and shows this in the status windows (upper right corner).

Character Set: Shows complete character set of chosen font.

Help

Help: Calls Font-ABC Help.

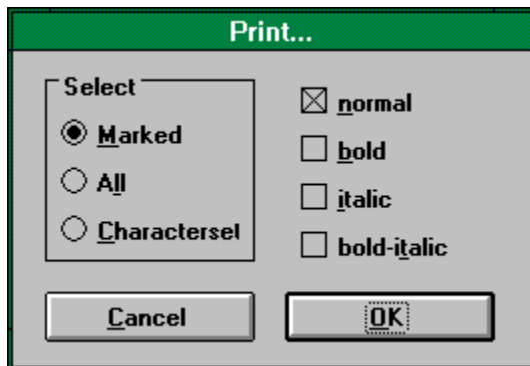
Search: Calls Font-ABC Help index.

Help on help: Calls Windows help file for Help.

About: Shows information about program version.

Register: Calls registration dialog.
Here you enter your personal registration code that you received after registration.

Print Menu



Marked

Sample text will be printed in marked font and size.

All

Sample text will be printed for all installed fonts.

This way you'll receive an overview of how every font looks with your sample text.

Character set

Character set of the marked font will be printed in style normal and selected size.

This function is very useful for symbol fonts (e.g. WingDings)! You may produce character charts (with ANSI-Codes) of every font for easier use with other programs .

In every field you'll see in the upper left corner the corresponding sign on the keyboard (ANSI 0032-0127), the lower left corner shows the ANSI-Code, which you may use alternatively (if the corresponding sign is not available on the keyboard). Hold the ALT-key down while entering the ANSI-Code of the chosen symbol (leading zeros are important).

Normal, Bold, Italic, Bold-Italic

Mark desired styles (1 to all)

see also: [Tips&Tricks](#)

Character set

You'll see a screen containing the complete character set of the marked font and size.

In every field there is in the upper left corner the corresponding sign on your keyboard (ANSI 0032-0127), in the lower left corner you will see the ANSI code which you may use alternatively (if characters are not available on keyboard). To do so hold down the Alt-key while entering the ANSI-Code (leading zeros are important!).

Press OK to return to main program.

Note:

If possible, choose a font size between 20 and 30 to avoid getting overlaps. Some fonts are not free scalable, that means not all font sizes may be viewed. If you are receiving small black boxes on your screen instead of characters this may be because this sign is not defined. It may also occur that a font is visible on screen but not be printable (and vice versa).

see also [Tips&Tricks](#)

Toolbar

The most important functions may be selected by a single click on the toolbar:

	Exit program
	Load
	Save
	Printer
	Printer Setup
	Character Set
	Bold
	Italic
	Normal
	Info about program version

see also: [Menu Commands](#)

Sample Text

You may enter and edit your sample text in the sample text window.

You may then go through the font list and see how your sample text looks with every font style. You may also vary by choosing several styles like bold or italic.

Limits: Text length is limited to 255 characters. This should be enough for printing font samples. Font-ABC doesn't want to replace your text editor!

see also: [Menu Commands](#)

Tips&Tricks

Printing font catalogs

For printing font catalogs choose a short meaningful sample text. It is usually enough to choose "normal" style only. Printing of font catalogs may take some time depending on printer, printer driver, processor and the number of installed fonts. You may fill your printer with paper, start the printing of a font catalog, and do something else in the meantime.

Minimize Windows startup time

Windows startup time depends on the number of installed fonts. If you want to print a full font catalog do the following:

- Make a copy of your current WIN.INI file, e.g. WIN.ORG.

- Install all fonts.

- Print a font catalog using Font-ABC.

- Copy back the original WIN.INI.

You may also use several copies of WIN.INI with several number of installed fonts. Or much easier do the following:

- Make a backup of WIN.INI.

- Install all fonts.

- Edit WIN.INI with an editor, e.g. notepad or sysedit.

- Look for the section "fonts" (in brackets).

- Move the fonts you always want to have installed at the beginning of this section.

- Insert a new section title "unused_fonts" (in brackets).

Restart Windows. Windows will ignore all fonts after the new section title. Windows recognizes a new unknown section and stops here with font installation.

If you then need these unused fonts you only need to enter a semicolon before the section name "unused_fonts" (Windows will consider this as a comment) and restart Windows. You'll have all fonts in your font list again!

Symbol fonts

With symbol fonts it is very useful to print character charts. This way you always have an overview of all available symbols and may use if necessary the desired symbol by choosing the corresponding ANSI code.

Problems

Font-ABC was tested in all functions before coming out as shareware. But there may still be problems with individual configurations. There are so many possible hardware and software combinations that incompatibilities may occur.

If you ever have a problem using Font-ABC don't hesitate to send me mail or E-mail. I'll do my best to help you.

If you have any suggestions send me an e-mail and I'll see if I can build it in a future version.

Please, fill in the order form (user profile is important for searching problem solutions) and describe the problem as well as possible: when it occurs, what it looks like a.s.o.!

Address see [Registration](#)

Order form

If You didn't receive the file "order.txt" You may copy this page and edit it:

Name _____
Address _____
City/State/Zip _____
Country _____
E-Mail Address _____

Please mail or e-mail to: J. Behling
Esternaystraße 23f
D-76337 Waldbronn
Germany
CIS: 100524,3121
INTERNET: 100524.3121@compuserve.com

I want to register Font-ABC 1.1. Please send me my personal registration code.
the registration fee (20 DM) was sent to Kto.-Nr. 291 58-679, Postbank Ludwigshafen, BLZ
545 100 67.

I received Font-ABC from _____

I want to get update information (yes/no).

User Profile:

Processor: 286/386/486/Pentium/other: _____
RAM: _____ MB Hard Drive: _____ MB CD-ROM: _____
Disk Drives: 5 1/4" DD - 5 1/4" HD - 3 1/2" DD - 3 1/2" HD
Monitor: _____ Inch, Resolution: _____ Graphics Card: _____
Printer: _____ Soundcard: _____ Modem: _____,
_____ Baud
Operating system: DOS Version: _____ Windows Version: _____
Fonts: True Type/Adobe Type I/Others: _____

Problems/Suggestions/Remarks:

Date ___/___/___, Signature _____

